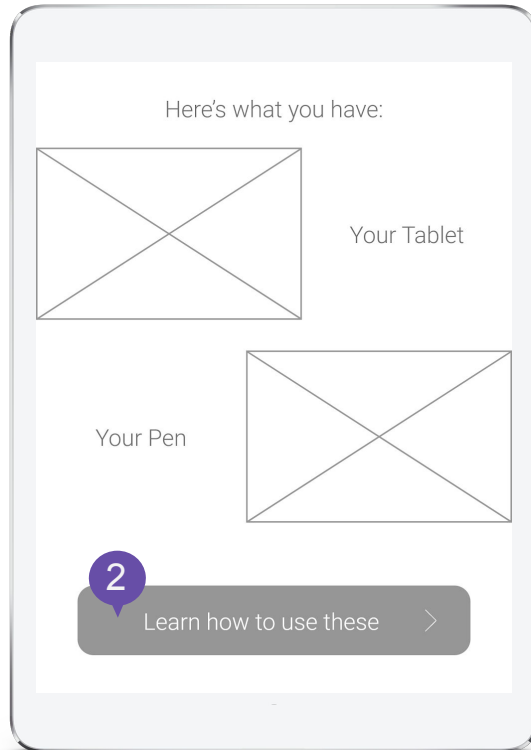
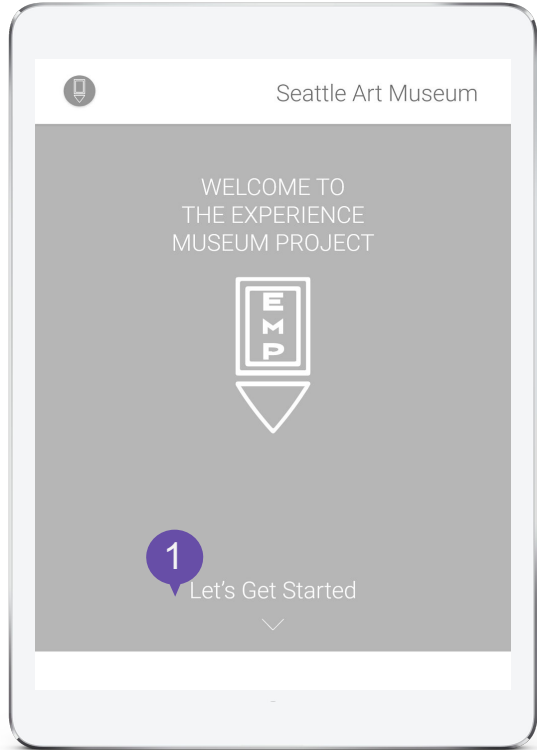




# P8 - Annotated Wireframes

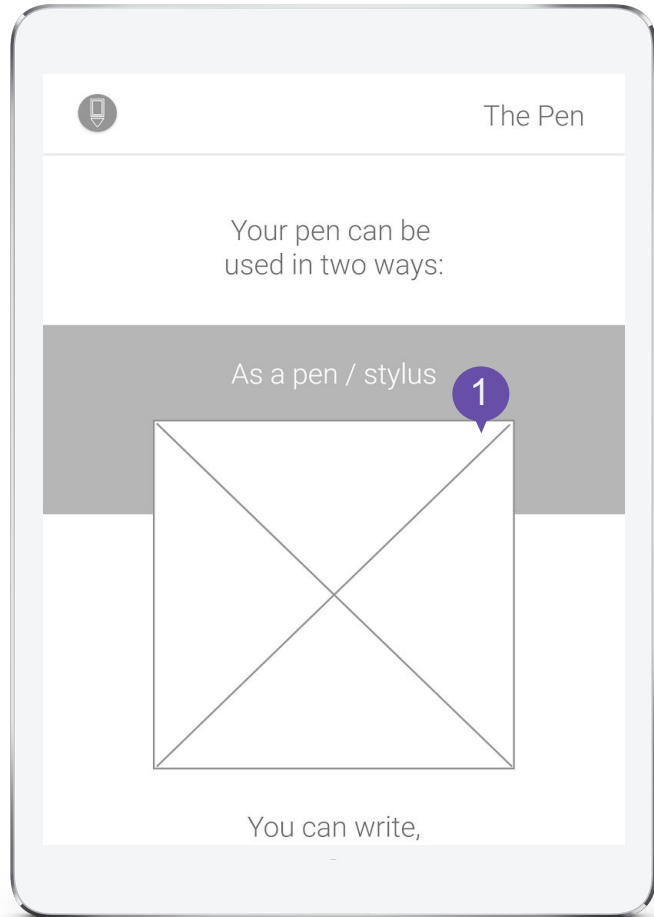
# Introduction + Tutorial

# Welcome Page



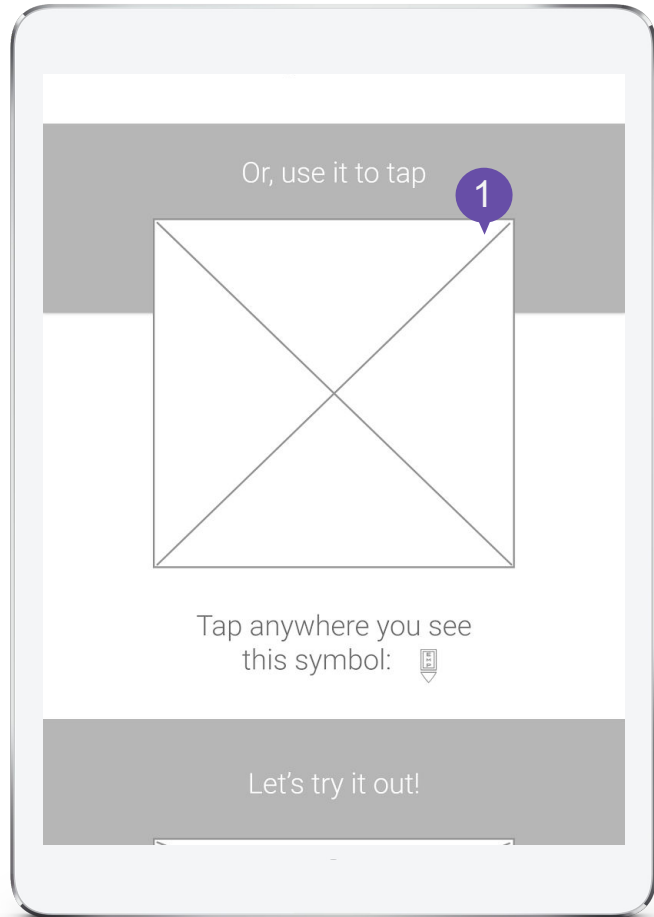
- 1 Click to learn more about product
- 2 Click to see tutorial

# Pen/Ticket



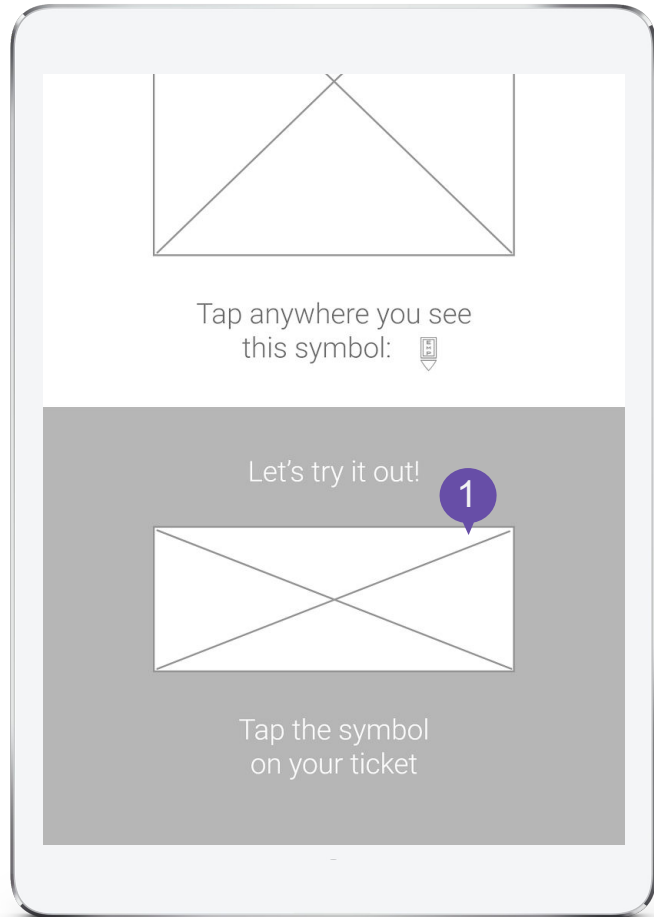
- 1 Displays hand holding pen to show user how to hold pen

# Pen/Ticket



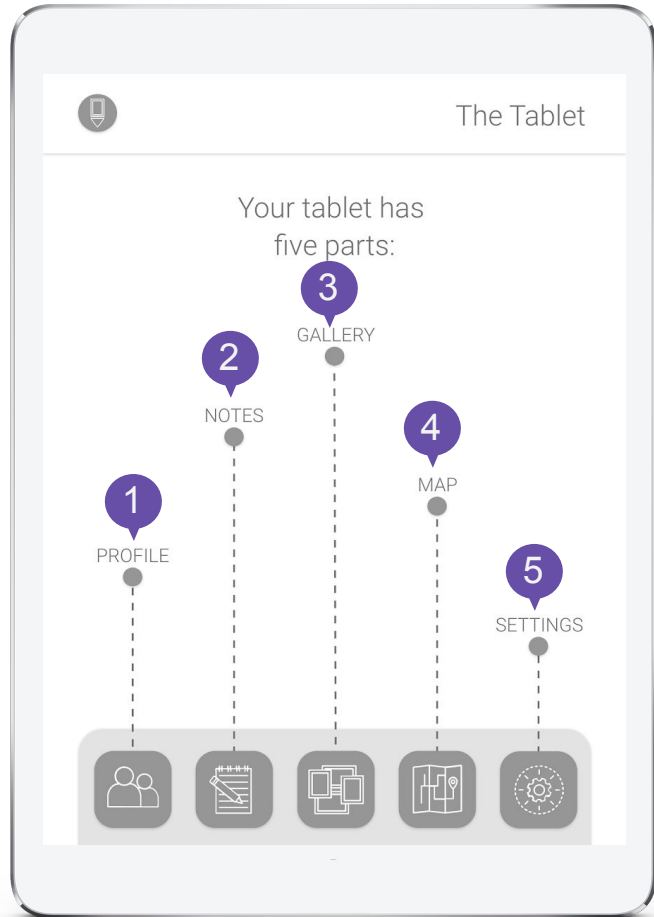
- 1 Displays picture of a symbol next to an art piece

# Pen/Ticket



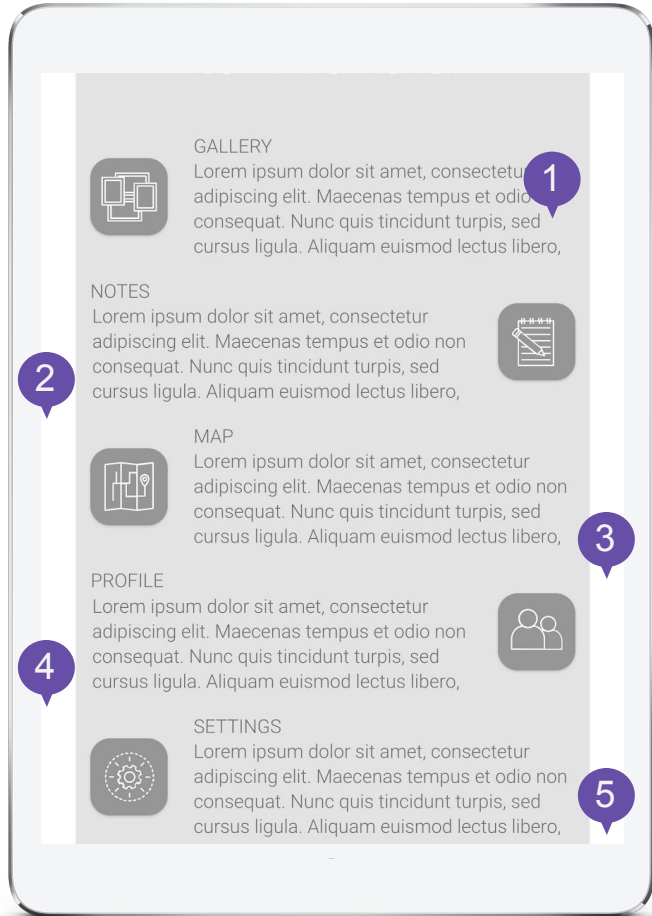
- 1 Displays picture of person using pen to tap symbol corresponding to an art piece

# Tablet



- 1 Profile label for first icon on navigation bar
- 2 Notes label for second icon
- 3 Gallery label for third icon
- 4 Map label for fourth icon
- 5 Settings label for fifth icon

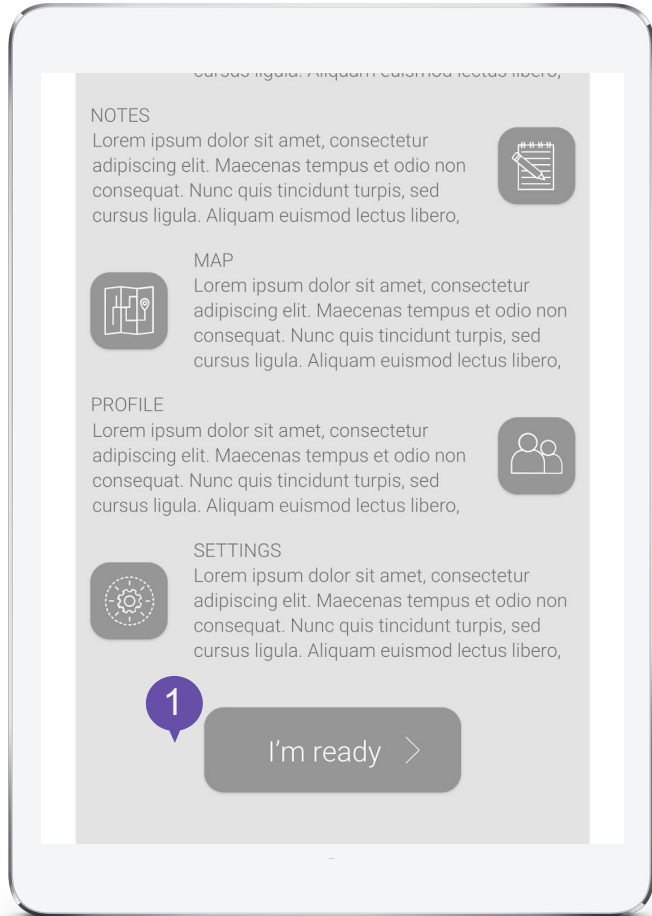
# Tablet



- 1 Description of Gallery icon
- 2 Description of Notepad icon
- 3 Description of Map icon
- 4 Description of Profile icon
- 5 Description of Settings icon

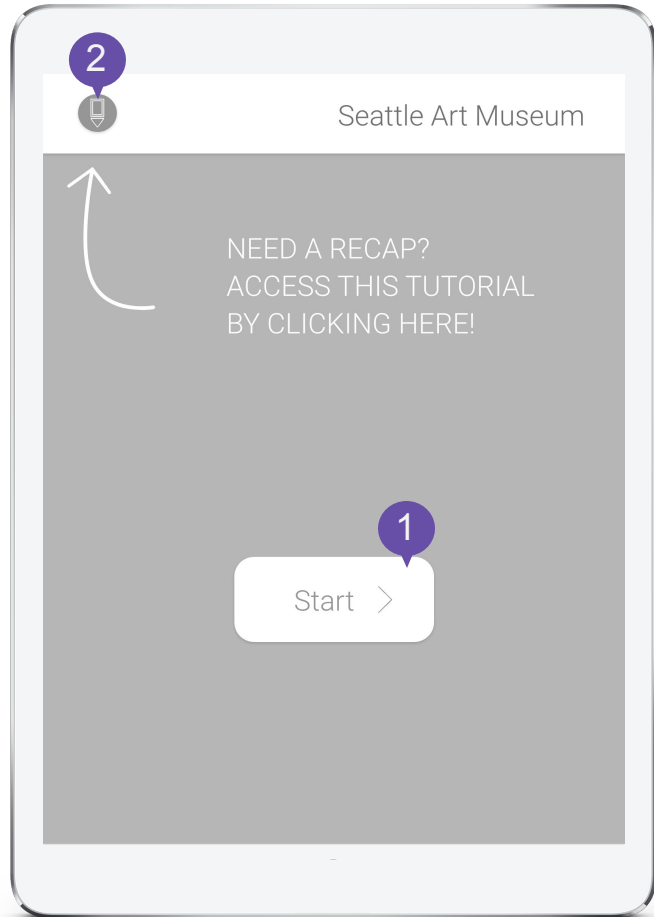


# Tablet



1 Click to finish the tutorial and start using the product

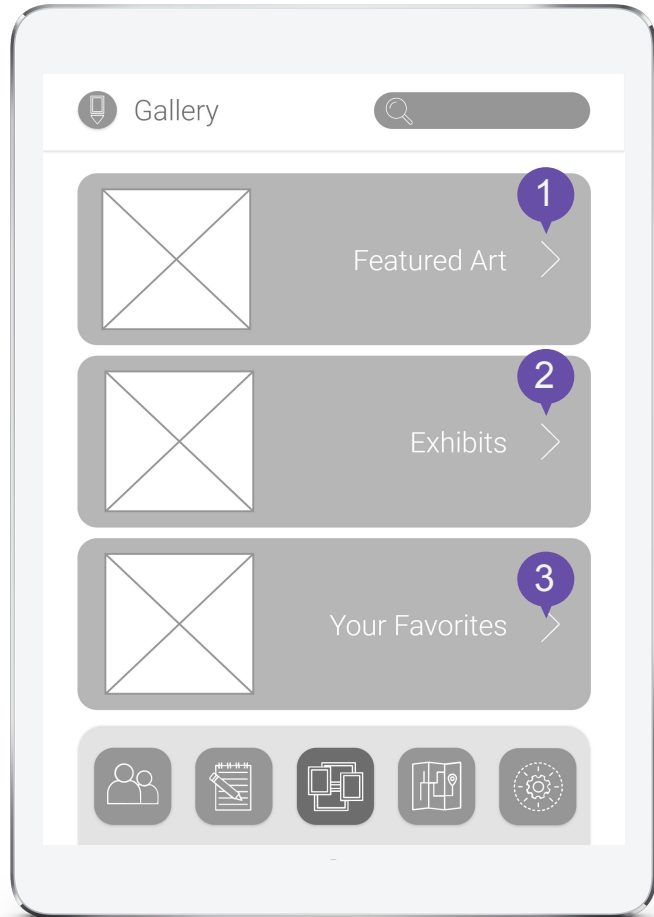
# Recap



- 1 Clicking on this button takes users to the gallery page
- 2 Takes users to tutorial view

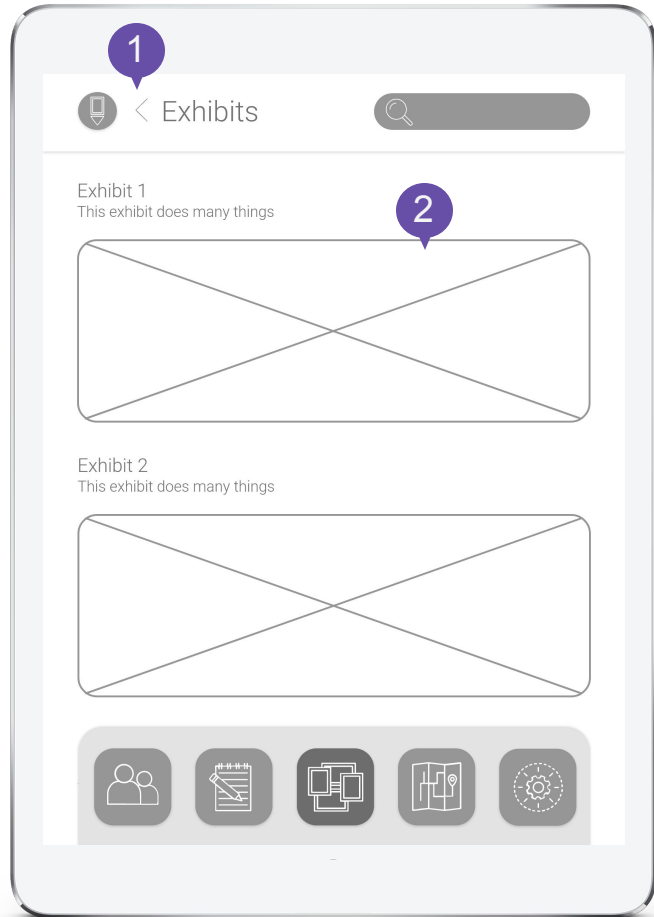
# Gallery

# Gallery



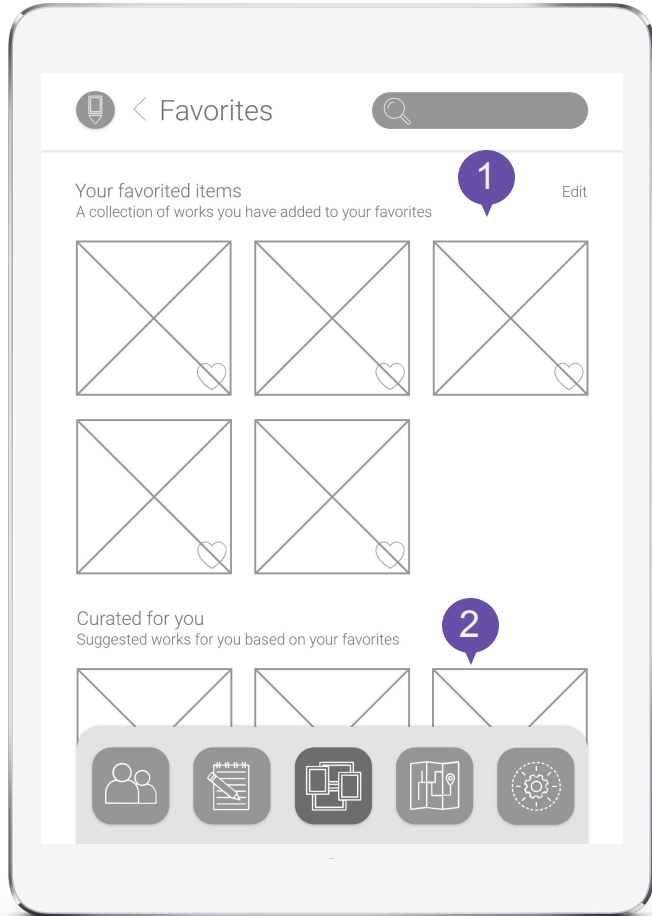
- 1 Takes users to the Featured Art page
- 2 Takes users to the Exhibits page
- 3 Takes users to the Favorites page

# Gallery - Exhibits



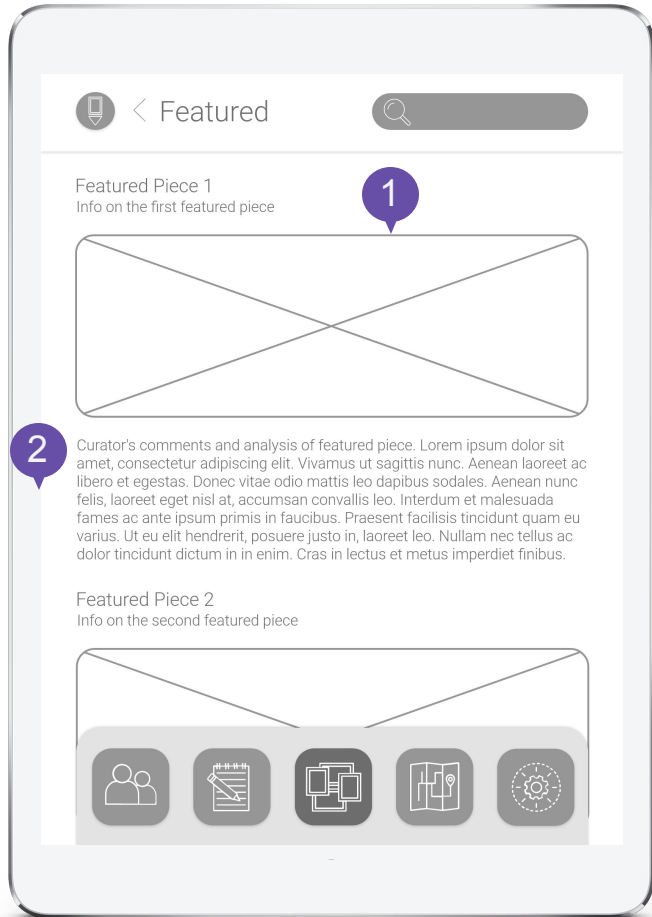
- 1 Goes back to the main Gallery page
- 2 Information cards on every available exhibit

# Gallery - Favorites



- 1 Art pieces that user has favorited. If an art piece is clicked, leads to art info page
- 2 Art pieces suggested for user based on favorited items. Can be clicked to access art info on piece

# Gallery - Featured



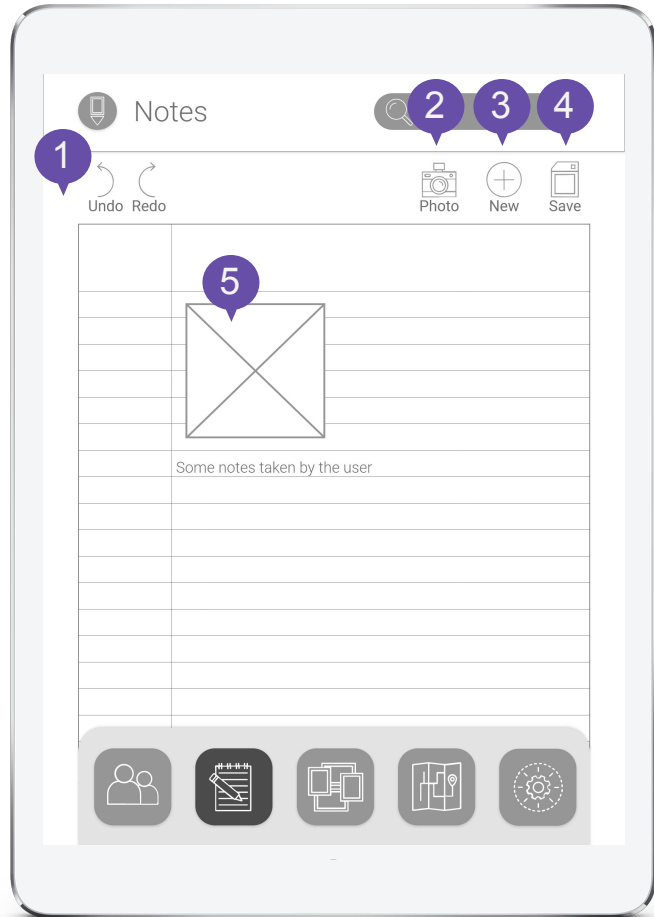
1 Click to access additional art information page on featured art

2 Curator's comments and analysis of featured piece

# Notes



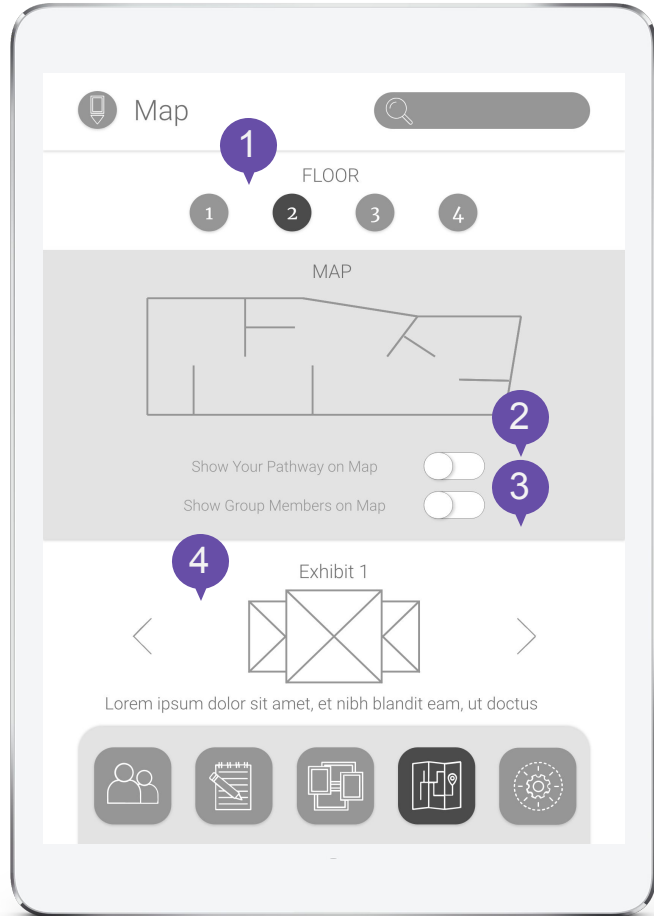
# Notes



- 1 Undo and redo action buttons
- 2 Take photo with tablet
- 3 Create a new page of notes
- 4 Save progress of notes
- 5 Images and text on notepad added by user

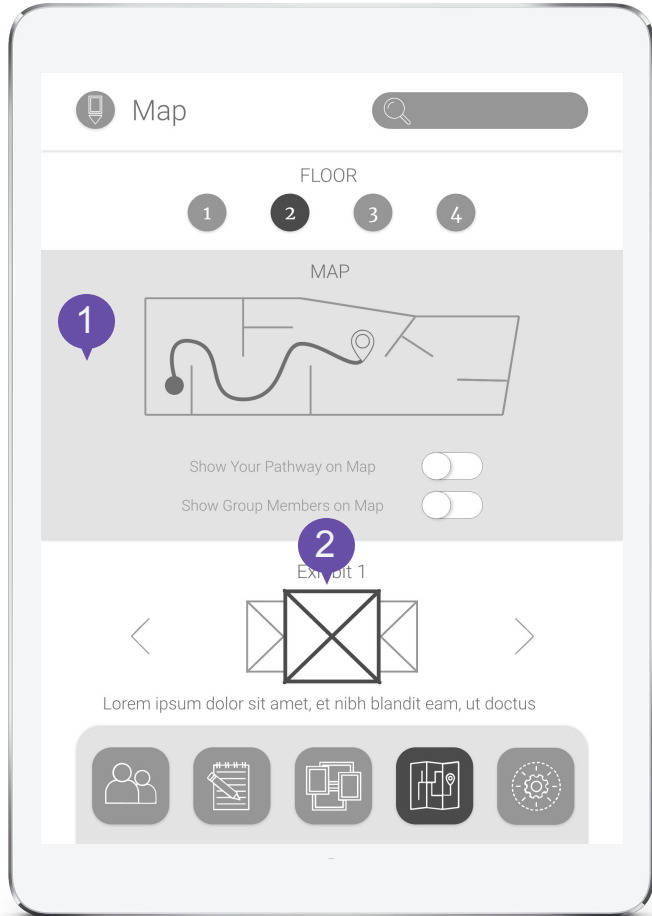
# Map

# Map



- 1 Choose which map floor to look at
- 2 Toggle to show user's pathway through the museum
- 3 Toggle to show the locations of group members
- 4 Browse and click exhibits to find in the museum

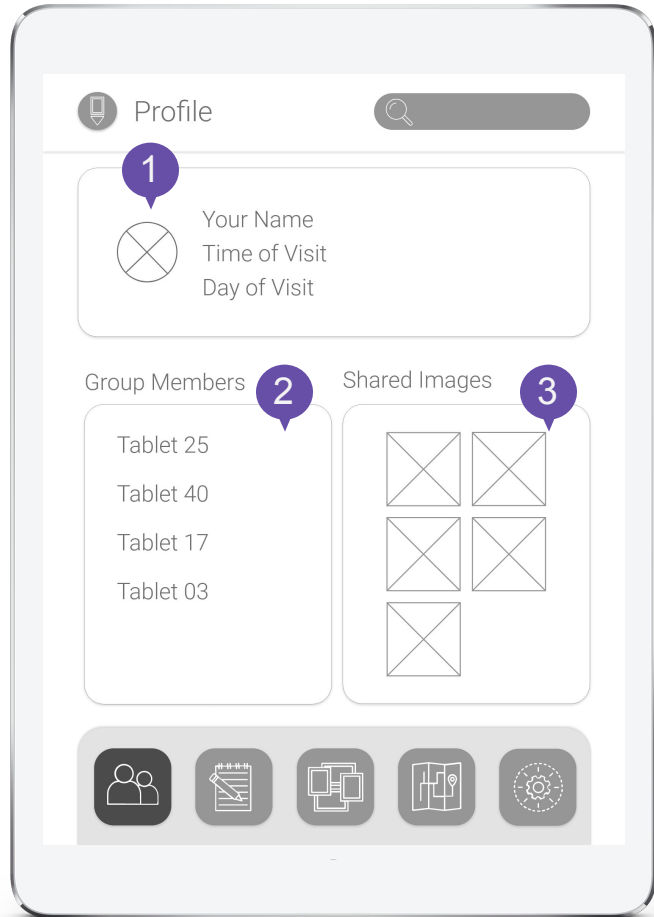
# Map - Pathway



- 1 Uses localized tracking to show pathway to selected art piece
- 2 Selected art piece for chosen path

# User Profile

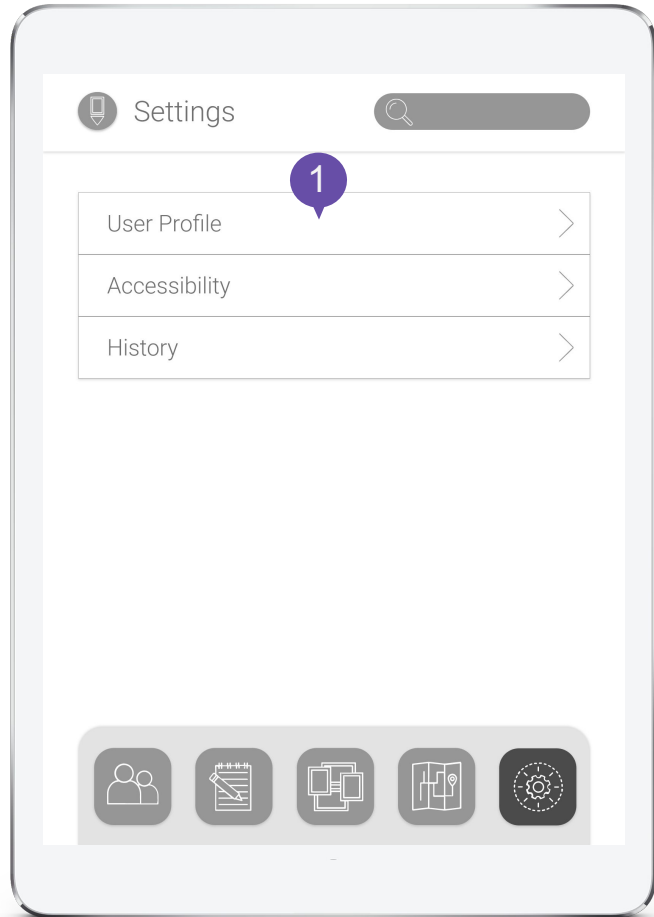
# Profile



- 1 Contains profile information, including name, time and day of visit from ticket
- 2 Contains connected group tablets (Tablets are connected by group when tickets are purchased)
- 3 Images shared within the group members

# Settings

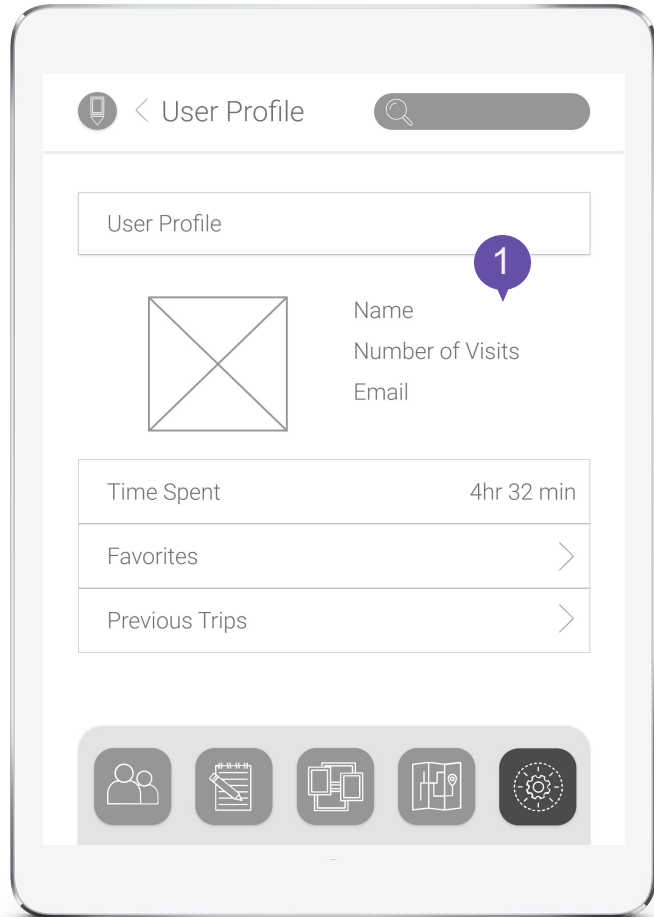
# Settings



- 1 Options to look through user profile, accessibility settings, and history

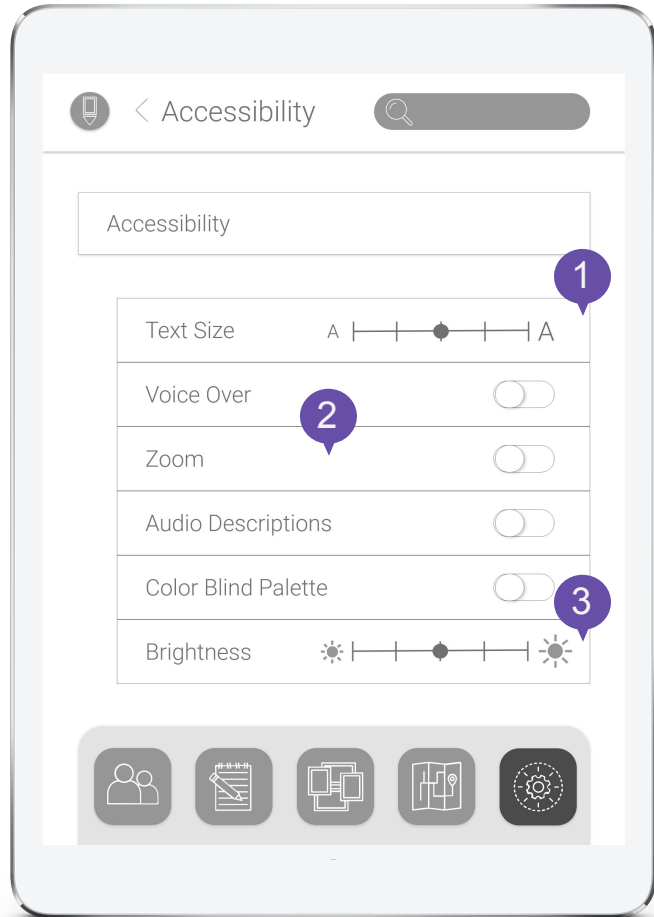


# Setting - User Profile



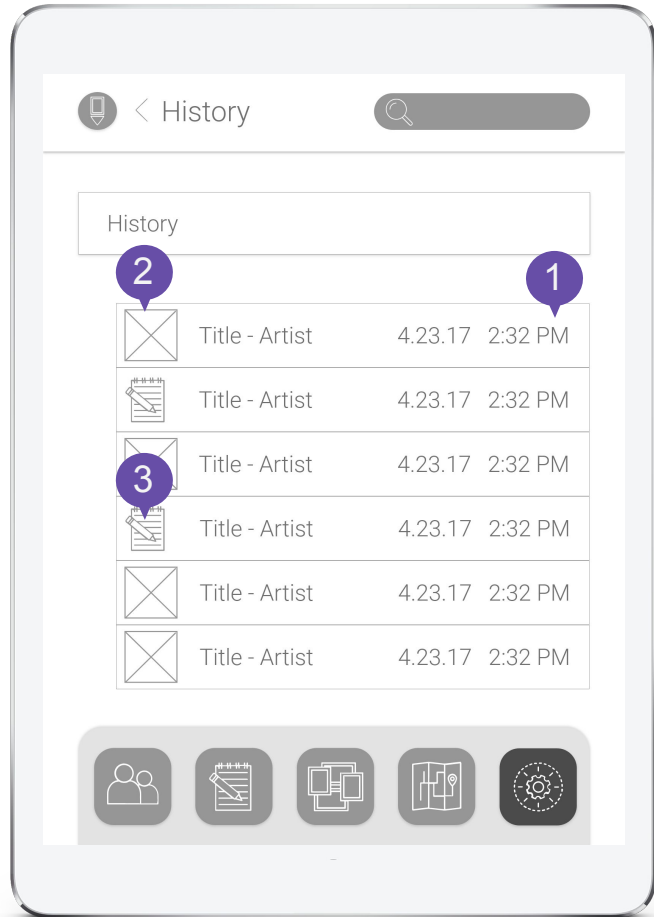
- 1 View or edit user profile information such as name, number of visits, email

# Settings - Accessibility



- 1 Change text size on tablet
- 2 Toggle for voiceover, zoom, audio descriptions and color blind palette
- 3 Change brightness

# Settings - History



- 1 Time stamp of different activities completed
- 2 Image that user has added to favorites
- 3 Note that user has written

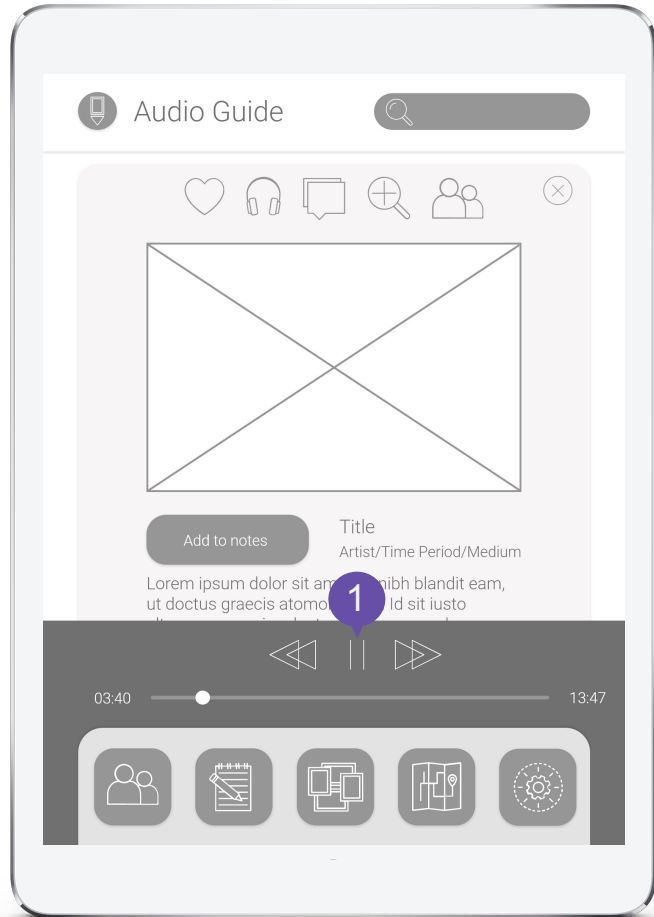
# Art Info Page

# Art Info



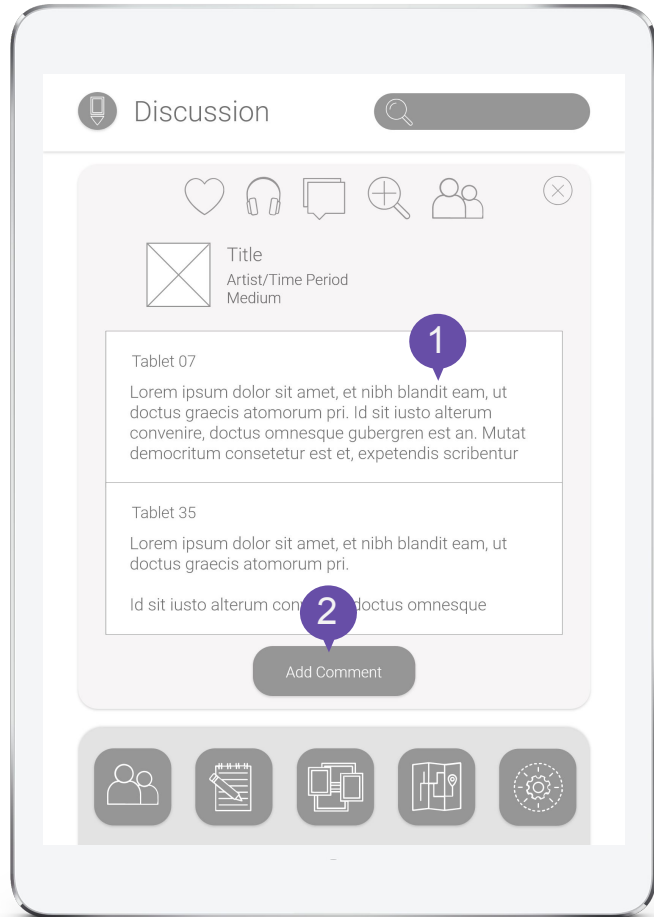
- 1 Adds exhibit to favorites
- 2 Plays audio of exhibit description
- 3 User can add comment on exhibit
- 4 Magnifies the image of exhibit
- 5 Shares exhibit to group

# Art Info - Audio Guide



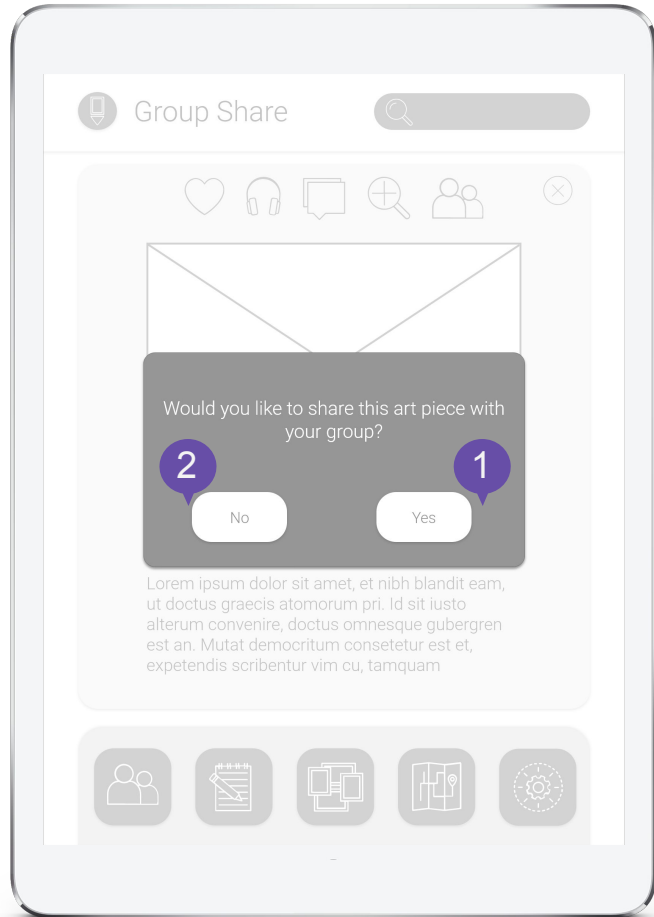
- 1 Plays an audio file describing the selected art piece

# Art Info - Discussion



- 1 Displays comments other users have made
- 2 Allows user to add a comment

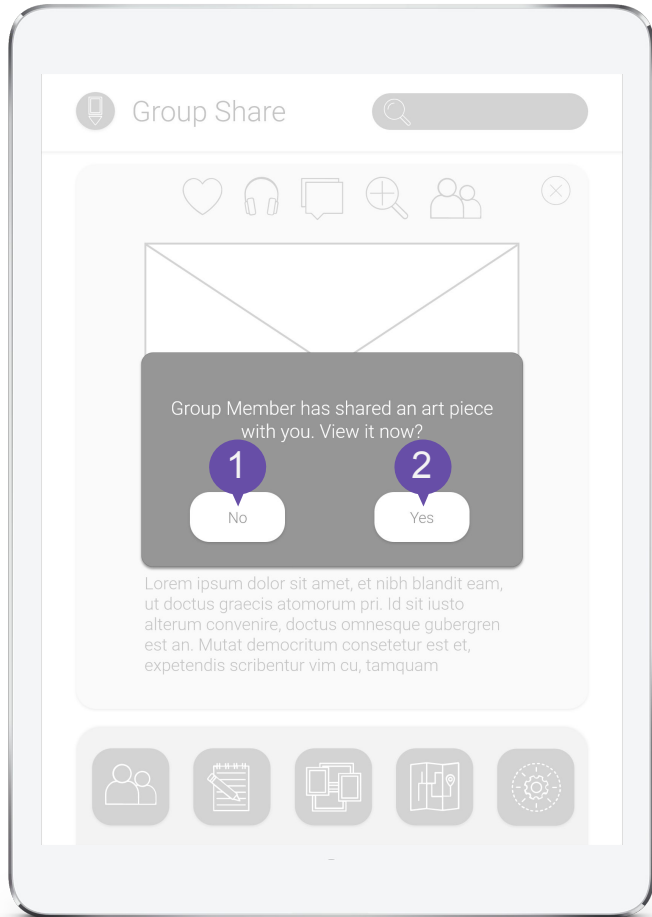
# Art Info - Group Share



- 1 Shares art info page with group members
- 2 Does not share art info page



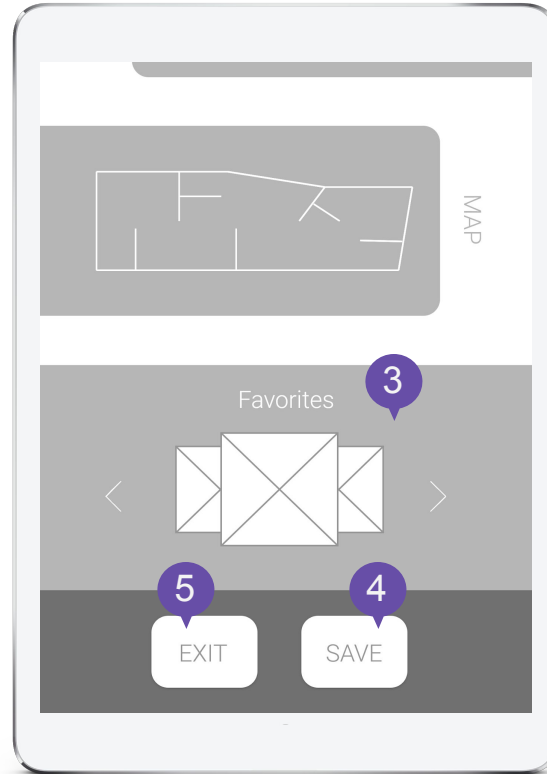
# Art Info - Group Receive



- 1 Does not view shared art piece
- 2 View shared art piece

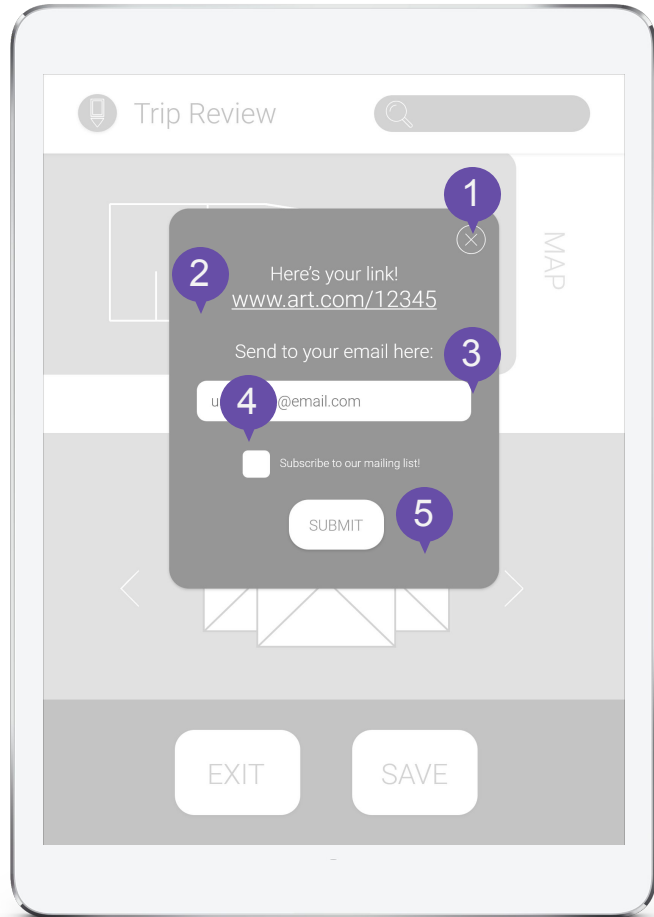
# Trip Review

# Trip Review



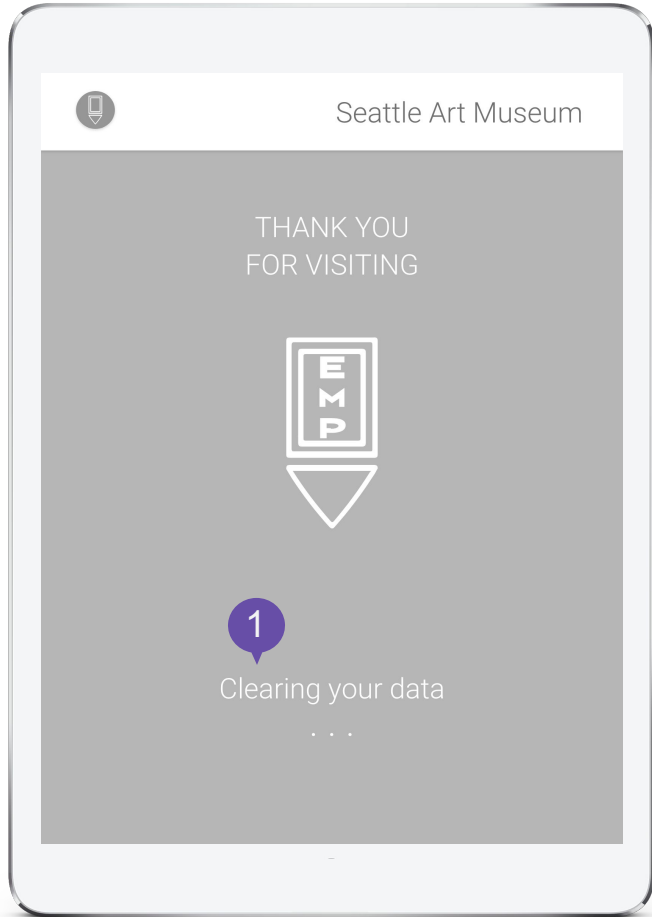
- 1 Shows overview of the exhibits visited and time spent in each exhibit
- 2 Shows pathway user has taken throughout their trip
- 3 Shows all the art pieces the user has favorited
- 4 Saves information
- 5 Exits the trip review

# Save Trip Review



- 1 Exit the pop up
- 2 Link for users to access their review for later
- 3 Allows users to email link to themselves
- 4 Checkbox to subscribe to mailing list
- 5 Submit to send the link to user's email

Exit



- 1 Thank you screen after user exits their trip review

# Key Path Scenarios